



Summary Certificate of Analysis

Batch: Zok-00126
 Date of Formulation: 2022-15-11
 Date of Manufacture: 2022-16-11
 Report Date: 2022-19-11
 Product: 2 GRAM DISPOSABLE
 Sku: THCX-DV-LR-ZOK-2-FZF

ISO 9001 2015 Cert No: C2021-04309
 Strain: Zookies
 Device: SL-PP6815
 Ingredients License Numbers:
 AG-R1058843IHH (HHC) C2021-04309 (Delta 8), AG-R1072031IHH (Live Resin)

Address of Manufacture: Abundant Labs, 289 Silkwood Dr, Canton, NC 28716

Instrumentation: HPLC (multiple) Instrument ID: HPLC Method: FF1011 (Frozen Fields Summary)

Analyte	LOD/LOQ (mg/g)	mg/g	% by weight
CBD	.0877	21.51	2.15
CBDA	.877	32.45	3.24
Total CBD*		41.94	4.19
Δ9 THC	.0877	LOQ	
THCA	.0877	2.11	0.21
Total THC*	.0877	2.11	0.21
CBG	.0877	LOQ	
CBGA	.0877	5.87	.58
Total CBG*	.0877	5.87	.58
THC-X IV	.877	LOQ	
THC-X A	.877	152.22	15.22
THC-X B	.877	148.61	14.86
Total THC-X*	.877	300.83	30.80
CBC	.877	5.84	.58
CBDV	.877	LOQ	
CBN	.877	31.03	3.10
Δ8 THC	.877	227.50	22.75
THCV	.877	LOQ	
HHC	.877	245.04	24.50
THCP	.877	LOQ	LOQ
Total Tested Cannabinoids		860.16	86.0

Totals account for decarboxylation of the acid and equal XXX + (XXXA * 0.877)
 For example:
 Total THC = Δ9-THC + (THCA * 0.877)
 Moisture content not included in Summary.

Results Summary:

Cannabinoid Compliance:	<input checked="" type="checkbox"/> Pass	<input type="checkbox"/> Fail
Pesticides:	<input checked="" type="checkbox"/>	<input type="checkbox"/>
Residual Solvents:	<input checked="" type="checkbox"/>	<input type="checkbox"/>
Heavy Metals:	<input checked="" type="checkbox"/>	<input type="checkbox"/>
Terpene Content:	8.8 %	

Notes: N/A

Signed By: Aaron O'Connor
 Production Manager

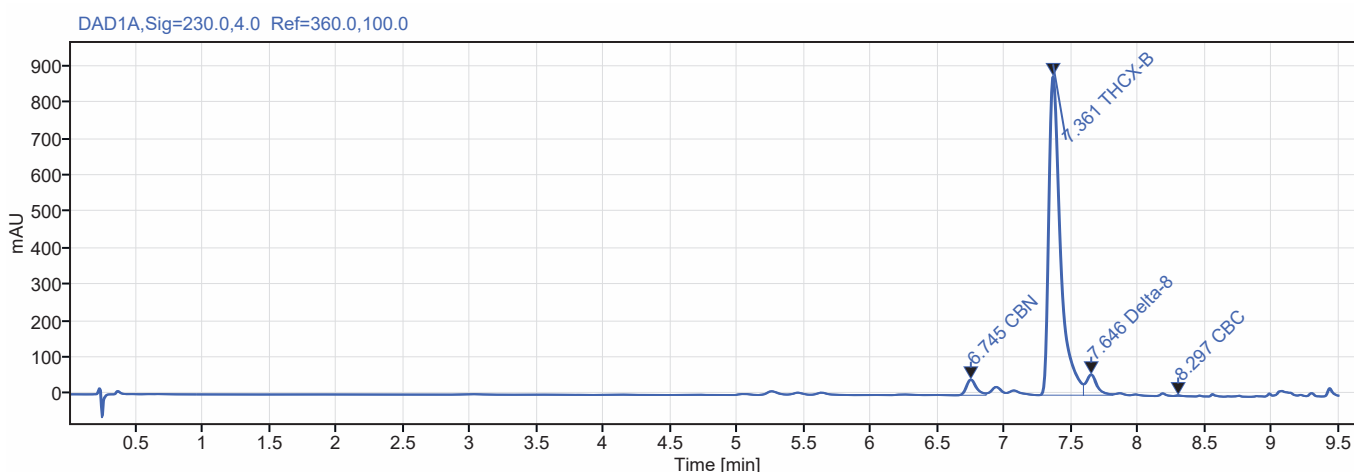
ND = Not Detected NT = Not Tested LOQ = Below Limit of quantification LOD = Limit Of Detection

CERTIFICATE DISCLAIMER: The results contained within this report are a summary of the components of the final formulation and rely on lab reports also contained herein. This report is confidential and for the exclusive use of the individual or organization for whom it was prepared. This report shall not be altered and must not be reproduced, unless in its entirety, without the express written permission from Frozen Fields LLC

Single Injection Report



Sample name: Butyrate Ester
Data file: Buty Ester2022-11-07 14-57-28-08-00.dx
Instrument: Agilent Infinity II HPLC
Acq. method: Cannabis bottom sense.amx
Processing method: *THCx %.pmx
Operator: Davis Collins
Injection date: 2022-11-07 14:58:11-08:00
Location: D1F-B3
Type: Sample



Signal: DAD1A,Sig=230.0,4.0 Ref=360.0,100.0

Name	RT [min]	Expected RT	Area	Wt. %
CBN	6.74	6.770	225.593	3.81
THCX-B	7.36	7.412	5362.327	90.55
Delta-8	7.65	7.674	326.254	5.51
CBC	8.30	8.195	7.581	0.13

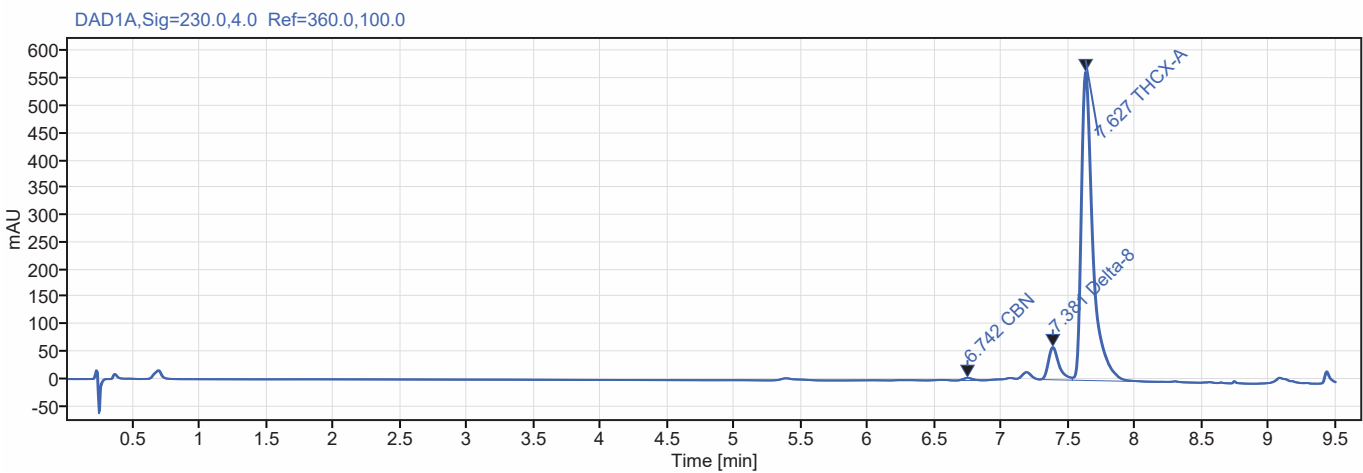
Total THCX Potency
905.5 mg/ml
Total Δ8-THC Potency
51.5 mg/ml
Total CBD Potency
0 mg/ml

For informational purposes only.

Single Injection Report



Sample name: Acetoacetate Ester
Data file: Ace Ester2022-11-07 14-45-42-08-00.dx
Instrument: Agilent Infinity II HPLC
Acq. method: Cannabis bottom sense.amx
Processing method: *THCx %.pmx
Operator: Davis Collins
Injection date: 2022-11-07 14:46:27-08:00
Location: D1F-B2
Type: Sample



Name	RT [min]	Expected RT	Area	Wt. %
CBN	6.74	6.770	22.293	0.60
Delta-8	7.38	7.412	327.002	8.76
THCX-A	7.63	7.674	3382.642	90.64

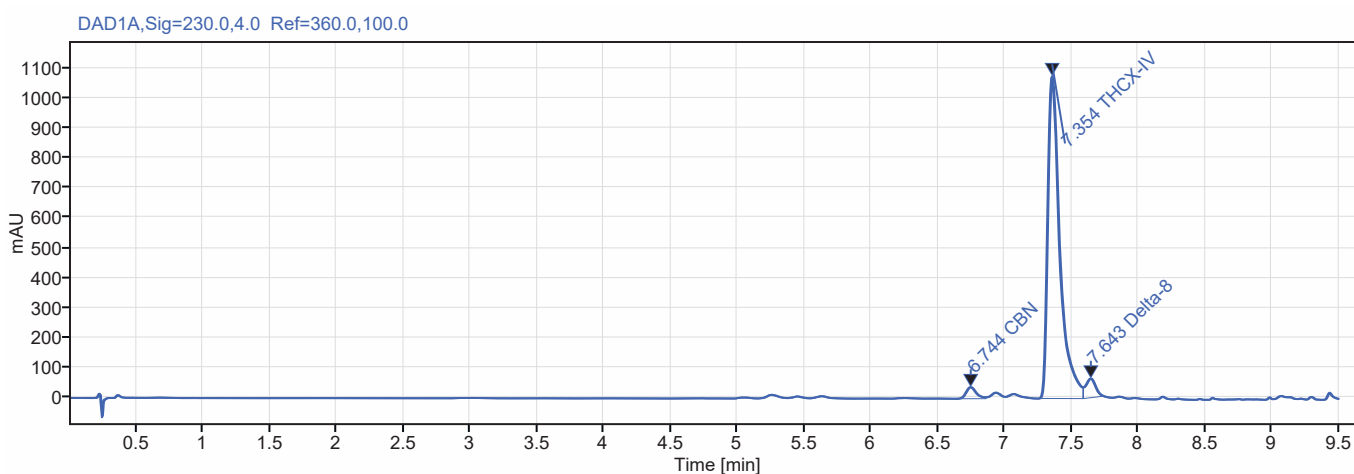
Total THCX Potency
906.4 mg/ml
Total Δ8-THC Potency
87.6 mg/ml
Total CBD Potency
0 mg/ml

For informational purposes only.

Single Injection Report



Sample name: Isovalerate Ester
Data file: Isov Ester2022-11-07 15-09-14-08-00.dx
Instrument: Agilent Infinity II HPLC
Acq. method: Cannabis bottom sense.amx
Processing method: *THCx %.pmx
Operator: Davis Collins
Injection date: 2022-11-07 15:09:58-08:00
Location: D1F-B4
Type: Sample



Signal: DAD1A,Sig=230.0,4.0 Ref=360.0,100.0

Name	RT [min]	Expected RT	Area	Wt. %
CBN	6.74	6.770	204.139	2.79
THCX-IV	7.35	7.412	6789.086	92.68
Delta-8	7.64	7.674	331.967	4.53

Total THCX Potency
926.8 mg/ml
Total Δ8-THC Potency
45.3 mg/ml
Total CBD Potency
0 mg/ml

For informational purposes only.



DEA No. RA0571996
 FL License # CMTL-0003
 CLIA No. 10D1094068

Certificate of Analysis

R&D

ABUNDANT LABS
 289 SILKWOOD DR
 CANTON, NC 28716

Batch # N/A
 Batch Date: 2022-10-19
 Extracted From: hemp

Test Reg State: Florida

Order # ABU221020-010001
 Order Date: 2022-10-20
 Sample # AADP577

Sampling Date: 2022-10-24
 Lab Batch Date: 2022-10-24
 Completion Date: 2022-10-27

Initial Gross Weight: 14.316 g



Product Image

Potency
 Tested

**Delta 8/Delta 10
 Potency 13 - (LCUV)**

Tested
 SOP13.052 (LCUV)

Specimen Weight: 54.050 mg

Analyte	LOD (%)	LOQ (%)	Result (mg/g)	(%)
Delta-8 THC	2.60E-5	0.0015	836.820	83.682
CBD	5.40E-5	0.0015	10.530	1.053
CBC	1.80E-5	0.0015		<LOQ
CBDA	1.00E-5	0.0015		<LOQ
CBDV	6.50E-5	0.0015		<LOQ
CBG	2.48E-4	0.0015		<LOQ
CBGA	8.00E-5	0.0015		<LOQ
CBN	1.40E-5	0.0015		<LOQ
Delta-10 THC	3.00E-6	0.0015		<LOQ
Delta-9 THC	1.30E-5	0.1		<LOQ
Delta6a10a-THC	8.47E-5	0.0015		<LOQ
THCA-A	3.20E-5	0.0015		<LOQ
THCV	7.00E-6	0.0015		<LOQ

Potency Summary

Total Delta 8 83.682%	-	Total Delta 10 None Detected
Total Active THC None Detected	-	Total Active CBD 1.053%
Total CBG None Detected	-	Total CBN None Detected
Other Cannabinoids None Detected	-	Total Cannabinoids 84.735%

Xueli Gao Lab Toxicologist
 Ph.D., DABT

Aixia Sun Lab Director/Principal Scientist
 D.H.Sc., M.Sc., B.Sc., MT (AAB)



Definitions and Abbreviations used in this report: Total Active CBD = CBD + (CBD-A * 0.877), *Total CBDV = CBDV + (CBDVA * 0.87), Total Active THC = THCA-A * 0.877 + Delta 9 THC, Total THC = THCV + (THCVA * 0.87), CBG Total = (CBGA * 0.877) + CBG, CBN Total = (CBNA * 0.877) + CBN, Total CBC = CBC + (CBCA * 0.877), Total THC-O-Acetate = Delta 8 THC-O-Acetate + Delta 9 THC-O-Acetate, Other Cannabinoids Total = Total Cannabinoids - All the listed cannabinoids on the summary section, Total Detected Cannabinoids = Delta6a10a-THC + Delta8-THC + Total CBN + CBT + Delta8-THCV + Total CBG + Total CBD + Total THCV + CBL + Total THC + Total CBC + Total CBDV + Delta10-THC + Total THC-O-Acetate, Analyte Details above show the Dry Weight Concentrations unless specified as 12% moisture concentration. (mg/ml) = Milligrams per Milliliter, LOQ = Limit of Quantitation, LOD = Limit of Detection, Dilution = Dilution Factor (ppb) = Parts per Billion, (%) = Percent, (cfu/g) = Colony Forming Unit per Gram (cfu/g) = Colony Forming Unit per Gram, LOD = Limit of Detection, (µg/g) = Microgram per Gram (ppm) = Parts per Million, (ppm) = (µg/g), (aw) = aw (area ratio) = Area Ratio, (mg/Kg) = Milligram per Kilogram, *Measurement of Uncertainty = +/- 10%

This report shall not be reproduced, without written approval, from ACS Laboratory. The results of this report relate only to the material or product analyzed. Test results are confidential unless explicitly waived otherwise. Accredited by a third-party accrediting body as a competent testing laboratory pursuant to ISO/IEC 17025 of the International Organization for Standardization.



12423 NE Whitaker Way
Portland, OR 97230
503-254-1794



Report Number: 21-012071/D004.R000
Report Date: 10/19/2021
ORELAP#: OR100028
Purchase Order:
Received: 10/12/21 14:15

Customer: Hempsi
Product identity: Sour RNA Live Oil #10072100
Client/Metric ID: .
Laboratory ID: 21-012071-0001

Summary

Potency:

Analyte	Result (%)		
CBD-A	64.9		
THC-A	4.12		
CBC-A [†]	2.73		
CBG-A [†]	1.41		
CBD	0.795		
CBDV-A [†]	0.273		
CBG [†]	0.215		
Δ9-THC	0.198		

CBD-Total	57.7%
THC-Total	3.81%
(Reported in percent of total sample)	

Residual Solvents:

All analytes passing and less than LOQ.

Pesticides:

All analytes passing and less than LOQ.

Terpenes:

Analyte	Percent by weight	Percent of Total	Analyte	Percent by weight	Percent of Total
β-Myrcene [†]	4.30	36.44%	Terpinolene [†]	2.24	18.98%
(R)-(+)-Limonene [†]	1.01	8.56%	β-Caryophyllene [†]	0.739	6.26%
farnesene [†]	0.659	5.58%	trans-β-Ocimene [†]	0.570	4.83%
(-)-Guaiol [†]	0.501	4.25%	Humulene [†]	0.308	2.61%
(-)-β-Pinene [†]	0.236	2.00%	a-pinene [†]	0.179	1.52%
Linalool [†]	0.120	1.02%	a-Bisabolol [†]	0.107	0.91%
(+)-fenchol [†]	0.103	0.87%	a-Terpinene [†]	0.103	0.87%
a-phellandrene [†]	0.0969	0.82%	(-)-a-Terpineol [†]	0.0898	0.76%
d-3-Carene [†]	0.0728	0.62%	gamma-Terpinene [†]	0.0699	0.59%
valencene [†]	0.0572	0.48%	(±)-trans-Nerolidol [†]	0.0501	0.42%
(-)-caryophyllene oxide [†]	0.0414	0.35%	Camphene [†]	0.0292	0.25%
cis-β-Ocimene [†]	0.0248	0.21%	p-Cymene [†]	0.0247	0.21%
(+)-Borneol [†]	0.0240	0.20%	Total Terpenes[†]	11.8	100.00%

Metals:

Less than LOQ for all analytes.



12423 NE Whitaker Way
 Portland, OR 97230
 503-254-1794



Report Number: 21-012071/D004.R000
Report Date: 10/19/2021
ORELAP#: OR100028
Purchase Order:
Received: 10/12/21 14:15

Customer: Hempti
 3913 NE Hancock St Unit 500
 Portland Oregon 97212
 United States of America (USA)

Product identity: Sour RNA Live Oil #10072100

Client/Metric ID: .

Sample Date:

Laboratory ID: 21-012071-0001

Evidence of Cooling: No

Temp: 19 °C

Relinquished by: USPS

Sample Results

Potency	Method J AOAC 2015 V98-6 (mod)		Units %	Batch: 2109283	Analyze: 10/13/21 7:46:00 PM
Analyte	As Received	Dry weight	LOQ	Notes	
CBC	< LOQ		0.0877		
CBC-A [†]	2.73		0.0877		
CBC-Total [†]	2.39		0.165		
CBD	0.795		0.0877		
CBD-A	64.9		0.877		
CBD-Total	57.7		0.857		
CBDV [†]	< LOQ		0.0877		
CBDV-A [†]	0.273		0.0877		
CBDV-Total [†]	0.237		0.164		
CBE [†]	< LOQ		0.0877		
CBG [†]	0.215		0.0877		
CBG-A [†]	1.41		0.0877		
CBG-Total	1.45		0.164		
CBL [†]	< LOQ		0.0877		
CBL-A [†]	< LOQ		0.0877		
CBL-Total [†]	< LOQ		0.165		
CBN	< LOQ		0.0877		
CBT [†]	< LOQ		0.0877		
Δ8-THC [†]	< LOQ		0.0877		
Δ8-THCV	< LOQ		0.0877		
Δ9-THC	0.198		0.0877		
THC-A	4.12		0.0877		
THC-Total	3.81		0.165		
THCV [†]	< LOQ		0.0877		
THCV-A [†]	< LOQ		0.0877		
THCV-Total [†]	< LOQ		0.164		
Total Cannabinoids[†]	74.6				



12423 NE Whitaker Way
 Portland, OR 97230
 503-254-1794



Report Number: 21-012071/D004.R000
Report Date: 10/19/2021
ORELAP#: OR100028
Purchase Order:
Received: 10/12/21 14:15

Solvents						Residual Solvents by GC/MS					Units µg/g		Batch 2109400		Analyze 10/19/21 12:27 PM			
Analyte	Result	Limits	LOQ	Status	Notes	Analyte	Result	Limits	LOQ	Status	Notes							
1,4-Dioxane	< LOQ	380	100	pass		2-Butanol	< LOQ	5000	200	pass								
2-Ethoxyethanol	< LOQ	160	30.0	pass		2-Methylbutane	< LOQ		200									
2-Methylpentane	< LOQ		30.0			2-Propanol (IPA)	< LOQ	5000	200	pass								
2,2-Dimethylbutane	< LOQ		30.0			2,2-Dimethylpropane	< LOQ		200									
2,3-Dimethylbutane	< LOQ		30.0			3-Methylpentane	< LOQ		30.0									
Acetone	< LOQ	5000	200	pass		Acetonitrile	< LOQ	410	100	pass								
Benzene	< LOQ	2.00	1.00	pass		Butanes (sum)	< LOQ	5000	400	pass								
Cyclohexane	< LOQ	3880	200	pass		Ethyl acetate	< LOQ	5000	200	pass								
Ethyl benzene	< LOQ		200			Ethyl ether	< LOQ	5000	200	pass								
Ethylene glycol	< LOQ	620	200	pass		Ethylene oxide	< LOQ	50.0	20.0	pass								
Hexanes (sum)	< LOQ	290	150	pass		Isopropyl acetate	< LOQ	5000	200	pass								
Isopropylbenzene	< LOQ	70.0	30.0	pass		m,p-Xylene	< LOQ		200									
Methanol	< LOQ	3000	200	pass		Methylene chloride	< LOQ	600	60.0	pass								
Methylpropane	< LOQ		200			n-Butane	< LOQ		200									
n-Heptane	< LOQ	5000	200	pass		n-Hexane	< LOQ		30.0									
n-Pentane	< LOQ		200			o-Xylene	< LOQ		200									
Pentanes (sum)	< LOQ	5000	600	pass		Propane	< LOQ	5000	200	pass								
Tetrahydrofuran	< LOQ	720	100	pass		Toluene	< LOQ	890	100	pass								
Total Xylenes	< LOQ		400			Total Xylenes and Ethyl	< LOQ	2170	600	pass								



12423 NE Whitaker Way
 Portland, OR 97230
 503-254-1794



Report Number: 21-012071/D004.R000
Report Date: 10/19/2021
ORELAP#: OR100028
Purchase Order:
Received: 10/12/21 14:15

Pesticides											
Method AOAC 2007.01 & EN 15662 (mod) Units mg/kg Batch 2109234 Analyze 10/13/21 12:13 PM											
Analyte	Result	Limits	LOQ	Status	Notes	Analyte	Result	Limits	LOQ	Status	Notes
Abamectin	< LOQ	0.50	0.250	pass		Acephate	< LOQ	0.40	0.250	pass	
Acequinocyl	< LOQ	2.0	1.00	pass		Acetamiprid	< LOQ	0.20	0.100	pass	
Aldicarb	< LOQ	0.40	0.200	pass		Azoxystrobin	< LOQ	0.20	0.100	pass	
Bifenazate	< LOQ	0.20	0.100	pass		Bifenthrin	< LOQ	0.20	0.100	pass	
Boscalid	< LOQ	0.40	0.200	pass		Carbaryl	< LOQ	0.20	0.100	pass	
Carbofuran	< LOQ	0.20	0.100	pass		Chlorantraniliprole	< LOQ	0.20	0.100	pass	
Chlorfenapyr	< LOQ	1.0	0.500	pass		Chlorpyrifos	< LOQ	0.20	0.100	pass	
Clofentezine	< LOQ	0.20	0.100	pass		Cyfluthrin	< LOQ	1.0	0.500	pass	
Cypermethrin	< LOQ	1.0	0.500	pass		Daminozide	< LOQ	1.0	0.500	pass	
Diazinon	< LOQ	0.20	0.100	pass		Dichlorvos	< LOQ	1.0	0.500	pass	
Dimethoate	< LOQ	0.20	0.100	pass		Ethoprophos	< LOQ	0.20	0.100	pass	
Etofenprox	< LOQ	0.40	0.200	pass		Etoxazole	< LOQ	0.20	0.100	pass	
Fenoxycarb	< LOQ	0.20	0.100	pass		Fenpyroximate	< LOQ	0.40	0.200	pass	
Fipronil	< LOQ	0.40	0.200	pass		Fonicamid	< LOQ	1.0	0.400	pass	
Fludioxonil	< LOQ	0.40	0.200	pass		Hexythiazox	< LOQ	1.0	0.400	pass	
Imazalil	< LOQ	0.20	0.100	pass		Imidacloprid	< LOQ	0.40	0.200	pass	
Kresoxim-methyl	< LOQ	0.40	0.200	pass		Malathion	< LOQ	0.20	0.100	pass	
Metalaxyl	< LOQ	0.20	0.100	pass		Methiocarb	< LOQ	0.20	0.100	pass	
Methomyl	< LOQ	0.40	0.200	pass		MGK-264	< LOQ	0.20	0.100	pass	
Myclobutanil	< LOQ	0.20	0.100	pass		Naled	< LOQ	0.50	0.250	pass	
Oxamyl	< LOQ	1.0	0.500	pass		Paclobutrazole	< LOQ	0.40	0.200	pass	
Parathion-Methyl	< LOQ	0.20	0.200	pass		Permethrin	< LOQ	0.20	0.100	pass	
Phosmet	< LOQ	0.20	0.100	pass		Piperonyl butoxide	< LOQ	2.0	1.00	pass	
Prallethrin	< LOQ	0.20	0.200	pass		Propiconazole	< LOQ	0.40	0.200	pass	
Propoxur	< LOQ	0.20	0.100	pass		Pyrethrin I (total)	< LOQ	1.0	0.500	pass	
Pyridaben	< LOQ	0.20	0.100	pass		Spinosad	< LOQ	0.20	0.100	pass	
Spiromesifen	< LOQ	0.20	0.100	pass		Spirotetramat	< LOQ	0.20	0.100	pass	
Spiroxamine	< LOQ	0.40	0.200	pass		Tebuconazole	< LOQ	0.40	0.200	pass	
Thiacloprid	< LOQ	0.20	0.100	pass		Thiamethoxam	< LOQ	0.20	0.100	pass	
Trifloxystrobin	< LOQ	0.20	0.100	pass							

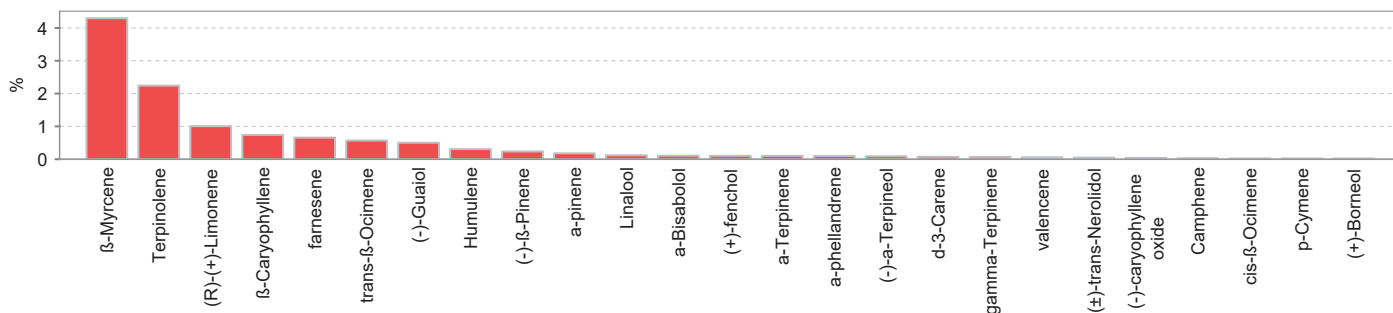


12423 NE Whitaker Way
Portland, OR 97230
503-254-1794

Report Number: 21-012071/D004.R000
Report Date: 10/19/2021
ORELAP#: OR100028
Purchase Order:
Received: 10/12/21 14:15



Terpenes				Method J AOAC 2015 V98-6	Units %	Batch 2109407	Analyze 10/19/21 12:00 AM		
Analyte	Result	LOQ	% of Total	Notes	Analyte	Result	LOQ	% of Total	Notes
β-Myrcene [†]	4.30	0.018	36.44%		Terpinolene [†]	2.24	0.018	18.98%	
(R)-(+)-Limonene [†]	1.01	0.018	8.56%		β-Caryophyllene [†]	0.739	0.018	6.263%	
farnesene [†]	0.659	0.018	5.585%		trans-β-Ocimene [†]	0.570	0.012	4.831%	
(-)-Guaiol [†]	0.501	0.018	4.246%		Humulene [†]	0.308	0.018	2.610%	
(-)-β-Pinene [†]	0.236	0.018	2.000%		α-pinene [†]	0.179	0.018	1.517%	
Linalool [†]	0.120	0.018	1.017%		α-Bisabolol [†]	0.107	0.018	0.907%	
(+)-fenchol [†]	0.103	0.018	0.873%		α-Terpinene [†]	0.103	0.018	0.873%	
α-phellandrene [†]	0.0969	0.018	0.8212%		(-)-α-Terpineol [†]	0.0898	0.018	0.7610%	
d-3-Carene [†]	0.0728	0.018	0.6169%		γ-Terpinene [†]	0.0699	0.018	0.5924%	
valencene [†]	0.0572	0.018	0.4847%		(±)-trans-Nerolidol [†]	0.0501	0.018	0.4246%	
(-)-caryophyllene oxide [†]	0.0414	0.018	0.3508%		Camphene [†]	0.0292	0.018	0.2475%	
cis-β-Ocimene [†]	0.0248	0.006	0.2102%		p-Cymene [†]	0.0247	0.018	0.2093%	
(+)-Borneol [†]	0.0240	0.018	0.2034%		Sabinene [†]	< LOQ	0.018	0.00%	
Geraniol [†]	< LOQ	0.018	0.00%		nerol [†]	< LOQ	0.018	0.00%	
Sabinene hydrate [†]	< LOQ	0.018	0.00%		Geranyl acetate [†]	< LOQ	0.018	0.00%	
(±)-Camphor [†]	< LOQ	0.018	0.00%		(+)-Pulegone [†]	< LOQ	0.018	0.00%	
(-)-Isopulegol [†]	< LOQ	0.018	0.00%		(+)-Cedrol [†]	< LOQ	0.018	0.00%	
(±)-cis-Nerolidol [†]	< LOQ	0.018	0.00%		(±)-fenchone [†]	< LOQ	0.018	0.00%	
α-cedrene [†]	< LOQ	0.018	0.00%		Eucalyptol [†]	< LOQ	0.018	0.00%	
Isoborneol [†]	< LOQ	0.018	0.00%		Menthol [†]	< LOQ	0.018	0.00%	
Total Terpenes	11.8								



Metals									
Analyte	Result	Limits	Units	LOQ	Batch	Analyze	Method	Status	Notes
Arsenic	< LOQ		mg/kg	0.0451	2109343	10/15/21	AOAC 2013.06 (mod.)	X	
Cadmium	< LOQ		mg/kg	0.0451	2109343	10/15/21	AOAC 2013.06 (mod.)	X	
Lead	< LOQ		mg/kg	0.0451	2109343	10/15/21	AOAC 2013.06 (mod.)	X	
Mercury	< LOQ		mg/kg	0.0225	2109343	10/15/21	AOAC 2013.06 (mod.)	X	



12423 NE Whitaker Way
 Portland, OR 97230
 503-254-1794



Report Number: 21-012071/D004.R000
Report Date: 10/19/2021
ORELAP#: OR100028
Purchase Order:
Received: 10/12/21 14:15

Mycotoxins

Analyte	Result	Limits	Units	LOQ	Batch	Analyze	Method	Status	Notes
Aflatoxin B2 [†]	< LOQ		µg/kg	5.00	2109363	10/18/21	AOAC 2007.01 & EN 15		
Aflatoxin B1 [†]	< LOQ		µg/kg	5.00	2109363	10/18/21	AOAC 2007.01 & EN 15		
Aflatoxin G1 [†]	< LOQ		µg/kg	5.00	2109363	10/18/21	AOAC 2007.01 & EN 15		
Aflatoxin G2 [†]	< LOQ		µg/kg	5.00	2109363	10/18/21	AOAC 2007.01 & EN 15		
Deoxynivalenol [†]	< LOQ		µg/kg	200	2109363	10/18/21	AOAC 2007.01 & EN 15		
Fumonisin B1 [†]	< LOQ		µg/kg	200	2109363	10/18/21	AOAC 2007.01 & EN 15		
Fumonisin B2 [†]	< LOQ		µg/kg	200	2109363	10/18/21	AOAC 2007.01 & EN 15		
HT2-Toxin [†]	< LOQ		µg/kg	40.0	2109363	10/18/21	AOAC 2007.01 & EN 15		
Nivalenol [†]	< LOQ		µg/kg	400	2109363	10/18/21	AOAC 2007.01 & EN 15		
Ochratoxin A [†]	< LOQ		µg/kg	5.00	2109363	10/18/21	AOAC 2007.01 & EN 15		
Ochratoxin B [†]	< LOQ		µg/kg	2.00	2109363	10/18/21	AOAC 2007.01 & EN 15		
T2-Toxin [†]	< LOQ		µg/kg	20.0	2109363	10/18/21	AOAC 2007.01 & EN 15		
Zearalenone [†]	< LOQ		µg/kg	200	2109363	10/18/21	AOAC 2007.01 & EN 15		



12423 NE Whitaker Way
Portland, OR 97230
503-254-1794



Report Number: 21-012071/D004.R000
Report Date: 10/19/2021
ORELAP#: OR100028
Purchase Order:
Received: 10/12/21 14:15

These test results are representative of the individual sample selected and submitted by the client.

Abbreviations

Limits: Action Levels per OAR-333-007-0400, OAR-333-007-0210, OAR-333-007-0220

Limit(s) of Quantitation (LOQ): The minimum levels, concentrations, or quantities of a target variable (e.g., target analyte) that can be reported with a specified degree of confidence.

† = Analyte not NELAP accredited.

Units of Measure

µg/g = Microgram per gram

µg/kg = Micrograms per kilogram = parts per billion (ppb)

mg/kg = Milligram per kilogram = parts per million (ppm)

% = Percentage of sample

% wt = µg/g divided by 10,000

Glossary of Qualifiers

X: Not ORELAP accredited.

Approved Signatory

Derrick Tanner
General Manager



12423 NE Whitaker Way
 Portland, OR 97230
 503-254-1794

Report Number: 21-012071/D004.R000
Report Date: 10/19/2021
ORELAP#: OR100028
Purchase Order:
Received: 10/12/21 14:15



Hemp / Cannabis Usable / Extract / Finished Products

Chain of Custody Record

Document Control ID: 2732 Revision: 1
 Effective: 05/04/2021
 ORELAP ID: **OR100028**

Company: <u>Hempsi</u> Contact: <u>Reid Stewart</u> Street: <u>815 Grand Blvd</u> City: <u>Vancouver</u> State: <u>WA</u> Zip: <u>98661</u> <input checked="" type="checkbox"/> Email Results: <u>r.stewart@hempsi.com</u> Ph: () () () <input type="checkbox"/> Fx Results: () () () Billing (if different): _____				Analysis Requested										PO Number: _____ Project Number: _____ Project Name: _____ Custom Reporting: _____ Report to State - <input type="checkbox"/> METRC or <input type="checkbox"/> Other: Turnaround time: <input type="checkbox"/> 5 Business Day Standard Turnaround <input type="checkbox"/> 3 Business Day Rush Turnaround* <input type="checkbox"/> 2 Business Day Rush Turnaround* *Check for availability			
Lab ID	Client Sample Identification	Date	Time	Pesticides - OR 59 compounds	Pesticide Multi-Residue - 379 compounds	Potency	Residual Solvents	Moisture & Water Activity	Terpenes	Micro: Yeast and Mold	Micro: E.Coli and Total Coliform	Heavy Metals	Mycotoxins	Other:	Sample Type †	Weight (Units)	Comments/Metric ID
	Sour RNA Live Oil #10072100	10/8/21	10/8	X	X	X	X	X			X	X				~ 10g	
			10/8														
			10/8														
			10/8														
			10/8														
			10/8														
			10/8														
			10/8														
			10/8														
Relinquished By:		Date	Time	Received By:			Date	Time	Lab Use Only:								
<u>Andrew Garton</u>		<u>10/19/21</u>	<u>9:00 am</u>	<u>DS</u>			<u>10/12/21</u>	<u>14:15</u>	<input checked="" type="checkbox"/> Shipped Via: <u>USPS</u> or <input type="checkbox"/> Client drop Evidence of cooling: <input type="checkbox"/> Yes <input checked="" type="checkbox"/> No - Temp (°C): <u>19.0°C</u> Sample in good condition: <input checked="" type="checkbox"/> Yes <input type="checkbox"/> No <input type="checkbox"/> Cash <input type="checkbox"/> Check <input type="checkbox"/> CC <input type="checkbox"/> Net: _____ Prelog storage: _____								

† - Sample Type Codes: Vegetation (V) ; Isolates (S) ; Extract/Concentrate (C) ; Tincture/Topical (T) ; Edible (E) ; Beverage (B)



12423 NE Whitaker Way
Portland, OR 97230
503-254-1794



Report Number: 21-012071/D004.R000
Report Date: 10/19/2021
ORELAP#: OR100028
Purchase Order:
Received: 10/12/21 14:15



Document ID: 3177 Revision: 2
Effective: 06/25/2021
Page 1 of 1

Job Number: _____ Search Name: _____

Package/Cooler opened on (if different than received date/time) Date: 10/12/21 Time: 14:15

Received By (Initials): DS Logged in by (Initials): _____ Date: _____ Time: _____

1) Were custody seals on outside of the package/cooler? YES NO NA
If YES, how many and where? _____

Does date match collection date on COC? _____ YES NO NA

2) Was Chain of Custody (COC) included in the package/cooler? YES NO NA

3) Was COC signed when relinquished and received? (time, date)? YES NO NA

4) How was the package/cooler delivered?

UPS FEDEX USPS CLIENT COURIER OTHER: _____

Tracking Number (written in or copy of shipping label): 9405 5111 0843 6375 8903 32

5) Was packing material used? YES NO NA

Peanuts Bubble Wrap Foam Paper Other:

6) Was temperature upon receipt 4°C+/- 2°C (if appropriate)? YES NO NA

If not, client contacted: _____

Proceed? YES NO

7) Was there evidence of cooling? YES NO NA

What kind? Blue Ice Ice Cooler Packs Dry Ice

8) Were all sample containers sealed in separate plastic bags? YES NO NA

9) Did all sample containers arrive in good condition? YES NO NA

10) Were all sample container labels complete? YES NO NA

11) Did all sample container labels and tags agree with the COC? YES NO NA

12) Were correct sample containers used for the tests indicated? YES NO NA

13) Were VOA vials checked for absence of air bubbles (note if found)? YES NO NA

14) Was a sufficient amount of sample sent in each sample container? YES NO NA

16) Sample location prior to login: R99 R39 R44 F44 Ambient Shelf Cannabis Table Other: _____

Explain any discrepancies: 19.0°C



12423 NE Whitaker Way
 Portland, OR 97230
 503-254-1794



Report Number: 21-012071/D004.R000
Report Date: 10/19/2021
ORELAP#: OR100028
Purchase Order:
Received: 10/12/21 14:15

Revision: Document ID:
 Legacy ID: Effective:

Laboratory Pesticide Quality Control Results

AOAC 2007.1 & EN 15662		Units: mg/Kg		Laboratory Control Sample			Batch ID: 2109234	
Analyte	Blank Result	Blank Limits	Notes	LCS Result	LCS Spike	LCS % Rec	Limits	Notes
Method blank								
Accephate	0.015	< 0.250		0.910	1.000	91.0	69.9 - 130	
Acetamiprid	0.000	< 0.100		0.369	0.400	92.1	70.5 - 131	
Aldicarb	0.000	< 0.200		0.741	0.800	92.6	73.3 - 136	
Abamectin	0.000	< 0.250		0.944	1.000	94.4	71.8 - 133	
Azoxystrobin	0.000	< 0.100		0.344	0.400	86.1	69.9 - 130	
Bifenazate	0.000	< 0.100		0.415	0.400	103.8	74.3 - 138	
Bifenthrin	0.000	< 0.100		0.375	0.400	93.8	69.7 - 129	
Boscalid	0.000	< 0.200		0.707	0.800	88.4	70.3 - 131	
Carbaryl	0.002	< 0.100		0.373	0.400	93.3	70.1 - 130	
Carbofuran	0.000	< 0.100		0.369	0.400	92.3	71.9 - 133	
Chlorantraniliprol	0.000	< 0.100		0.361	0.400	90.3	69.0 - 128	
Chlorfenapyr	0.000	< 0.500		1.884	2.000	94.2	71.1 - 132	
Chlorpyrifos	0.000	< 0.100		0.362	0.400	90.4	68.3 - 127	
Clofentezine	0.000	< 0.100		0.364	0.400	91.1	69.6 - 129	
Cyfluthrin	0.000	< 0.500		1.892	2.000	94.6	71.9 - 134	
Cypermethrin	0.000	< 0.500		1.846	2.000	92.3	71.1 - 132	
Daminozide	0.088	< 0.500		1.769	2.000	88.5	71.8 - 133	
Diazinon	0.000	< 0.100		0.422	0.400	105.6	70.0 - 130	
Dichlorvos	0.000	< 0.500		1.790	2.000	89.5	68.4 - 127	
Dimethoat	0.000	< 0.100		0.362	0.400	90.5	70.5 - 131	
Ethoprophos	0.000	< 0.100		0.360	0.400	90.0	69.3 - 129	
Etofenprox	0.000	< 0.200		0.733	0.800	91.6	71.9 - 134	
Etoxazol	0.000	< 0.100		0.360	0.400	90.0	70.5 - 131	
Fenoxycarb	0.000	< 0.100		0.364	0.400	91.1	69.9 - 130	
Fenpyroximat	0.000	< 0.200		0.738	0.800	92.3	70.6 - 131	
Fipronil	0.000	< 0.200		0.779	0.800	97.4	71.9 - 134	
Fonicamid	0.000	< 0.250		0.890	1.000	89.0	70.4 - 131	
Fludioxonil	0.000	< 0.200		0.738	0.800	92.2	73.6 - 137	
Hexythiazox	0.000	< 0.250		0.925	1.000	92.5	68.9 - 128	
Imazalil	0.000	< 0.100		0.368	0.400	92.0	72.2 - 134	
Imidacloprid	0.000	< 0.200		0.727	0.800	90.8	69.7 - 130	
Kresoxim-Methyl	0.000	< 0.200		0.724	0.800	90.5	70.2 - 130	
Malathion	0.000	< 0.100		0.364	0.400	91.1	69.4 - 129	
Metaxalyl	0.000	< 0.100		0.364	0.400	91.1	70.5 - 131	
Methiocarb	0.004	< 0.100		0.363	0.400	90.8	70.1 - 130	
Methomyl	0.000	< 0.200		0.703	0.800	87.8	69.7 - 129	
MGK 264	0.000	< 0.100		0.361	0.400	90.2	69.7 - 129	
Myclobutanil	0.000	< 0.100		0.361	0.400	90.3	70.1 - 130	
Naled	0.000	< 0.250		0.903	1.000	90.3	72.2 - 134	
Oxamyl	0.000	< 0.500		1.783	2.000	89.2	70.7 - 131	
Paclobutrazol	0.000	< 0.200		0.731	0.800	91.3	70.5 - 131	
Parathion Methyl	0.000	< 0.200		0.758	0.800	94.8	72.1 - 134	
Permethrin	0.000	< 0.100		0.379	0.400	94.8	70.2 - 130	
Phosmet	0.000	< 0.100		0.361	0.400	90.2	69.8 - 130	
Piperonyl butoxide	0.000	< 0.500		1.869	2.000	93.4	72.6 - 135	
Prallethrin	0.000	< 0.100		0.373	0.400	93.4	70.7 - 131	
Propiconazole	0.000	< 0.200		0.737	0.800	92.2	70.2 - 130	
Propoxur	0.005	< 0.100		0.363	0.400	90.7	69.7 - 129	
Pyrethrins	0.000	< 0.100		0.380	0.413	92.0	69.0 - 128	
Pyridaben	0.000	< 0.100		0.368	0.400	92.0	69.7 - 129	
Spinosad	0.000	< 0.100		0.382	0.388	98.4	72.4 - 135	
Spiromesifen	0.000	< 0.100		0.369	0.400	92.2	71.3 - 132	
Spirotetramat	0.000	< 0.100		0.369	0.400	92.3	70.4 - 131	
Spiroxamine	0.000	< 0.200		0.709	0.800	88.6	68.5 - 127	
Tebuconazol	0.000	< 0.200		0.753	0.800	94.2	69.9 - 130	
Thiacloprid	0.000	< 0.100		0.364	0.400	91.0	69.6 - 129	
Thiamethoxam	0.000	< 0.100		0.378	0.400	94.5	69.7 - 129	
Trifloxystrobin	0.000	< 0.100		0.359	0.400	89.7	70.4 - 131	



12423 NE Whitaker Way
 Portland, OR 97230
 503-254-1794



Report Number: 21-012071/D004.R000
 Report Date: 10/19/2021
 ORELAP#: OR100028
 Purchase Order:
 Received: 10/12/21 14:15

Revision: Document ID:
 Legacy ID: Effective:

Laboratory Pesticide Quality Control Results

AOAC 2007.1 & EN 15662		Units: mg/Kg					Batch ID: 2109234				
Matrix Spike/Matrix Spike Duplicate Recoveries		Sample ID: 21-011896-0001									
Analyte	Result	MS Res	MSD Res	Spike	RPD%	Limit	MS % Rec	MSD % Rec	Limits	Notes	
Acephate	0.000	0.787	0.795	1.000	0.9%	< 30	78.7%	79.5%	50 - 150		
Acetamiprid	0.000	0.349	0.351	0.400	0.5%	< 30	87.2%	87.6%	50 - 150		
Aldicarb	0.000	0.708	0.709	0.800	0.1%	< 30	88.6%	88.6%	50 - 150		
Abamectin	0.000	0.732	0.742	1.000	1.3%	< 30	73.2%	74.2%	50 - 150		
Azoxystrobin	0.000	0.325	0.330	0.400	1.7%	< 30	81.1%	82.6%	50 - 150		
Bifenazate	0.000	0.426	0.416	0.400	2.3%	< 30	106.5%	104.1%	50 - 150		
Bifenthrin	0.000	0.228	0.225	0.400	1.5%	< 30	57.0%	56.1%	50 - 150		
Boscalid	0.000	0.666	0.759	0.800	13.2%	< 30	83.2%	94.9%	50 - 150		
Carbaryl	0.000	0.320	0.320	0.400	0.1%	< 30	80.0%	80.1%	50 - 150		
Carbofuran	0.000	0.318	0.317	0.400	0.3%	< 30	79.6%	79.3%	50 - 150		
Chlorantraniliprol	0.000	0.371	0.399	0.400	7.2%	< 30	92.8%	99.8%	50 - 150		
Chlorfenapyr	0.000	1.112	1.280	2.000	14.1%	< 30	55.6%	64.0%	50 - 150		
Chlorpyrifos	0.000	0.373	0.386	0.400	3.6%	< 30	93.1%	96.5%	50 - 150		
Clofentezine	0.000	0.284	0.278	0.400	2.4%	< 30	71.1%	69.4%	50 - 150		
Cyfluthrin	0.000	1.048	1.105	2.000	5.3%	< 30	52.4%	55.2%	30 - 150		
Cypermethrin	0.000	1.048	1.033	2.000	1.4%	< 30	52.4%	51.6%	50 - 150		
Daminozide	0.084	1.611	1.526	2.000	5.7%	< 30	76.3%	72.1%	30 - 150		
Diazinon	0.000	0.396	0.400	0.400	1.1%	< 30	99.0%	100.0%	50 - 150		
Dichlorvos	0.000	1.491	1.480	2.000	0.8%	< 30	74.6%	74.0%	50 - 150		
Dimethoat	0.000	0.337	0.336	0.400	0.1%	< 30	84.2%	84.1%	50 - 150		
Ethoprophos	0.008	0.342	0.347	0.400	1.5%	< 30	83.5%	84.8%	50 - 150		
Etofenprox	0.000	0.478	0.474	0.800	0.9%	< 30	59.7%	59.2%	50 - 150		
Etoxazol	0.000	0.313	0.307	0.400	2.1%	< 30	78.3%	76.7%	50 - 150		
Fenoxycarb	0.000	0.337	0.336	0.400	0.5%	< 30	84.3%	83.9%	50 - 150		
Fenpyroximat	0.000	0.538	0.527	0.800	2.0%	< 30	67.3%	65.9%	50 - 150		
Fipronil	0.000	0.533	0.524	0.800	1.8%	< 30	66.7%	65.5%	50 - 150		
Fonicamid	0.000	0.755	0.737	1.000	2.4%	< 30	75.5%	73.7%	50 - 150		
Fludioxonil	0.000	0.863	0.857	0.800	0.7%	< 30	107.9%	107.2%	50 - 150		
Hexythiazox	0.000	0.633	0.612	1.000	3.3%	< 30	63.3%	61.2%	50 - 150		
Imazalil	0.000	0.351	0.336	0.400	4.4%	< 30	87.7%	84.0%	50 - 150		
Imidacloprid	0.000	0.943	0.924	0.800	2.1%	< 30	117.9%	115.5%	50 - 150		
Kresoxim-Methyl	0.000	0.635	0.636	0.800	0.2%	< 30	79.3%	79.4%	50 - 150		
Malathion	0.000	0.345	0.341	0.400	1.0%	< 30	86.2%	85.3%	50 - 150		
Metaxyl	0.108	0.359	0.361	0.400	0.6%	< 30	62.8%	63.2%	50 - 150		
Methiocarb	0.003	0.349	0.353	0.400	1.0%	< 30	86.7%	87.5%	50 - 150		
Methomyl	0.000	0.803	0.726	0.800	10.0%	< 30	100.4%	90.8%	50 - 150		
MGK 264	0.000	0.315	0.317	0.400	0.7%	< 30	78.8%	79.4%	50 - 150		
Myclobutanil	0.000	0.318	0.305	0.400	4.0%	< 30	79.5%	76.4%	50 - 150		
Naled	0.000	0.819	0.810	1.000	1.1%	< 30	81.9%	81.0%	50 - 150		
Oxamyl	0.000	2.141	1.883	2.000	12.8%	< 30	107.1%	94.2%	50 - 150		
Paclobutrazol	0.000	0.614	0.610	0.800	0.7%	< 30	76.8%	76.2%	50 - 150		
Parathion Methyl	0.651	1.086	1.100	0.800	3.0%	< 30	54.4%	56.1%	30 - 150		
Permethrin	0.000	0.265	0.254	0.400	4.0%	< 30	66.2%	63.5%	50 - 150		
Phosmet	0.000	0.330	0.332	0.400	0.4%	< 30	82.5%	82.9%	50 - 150		
Piperonyl butoxide	0.005	1.687	1.643	2.000	2.6%	< 30	84.1%	81.9%	50 - 150		
Prallethrin	0.022	0.407	0.424	0.400	4.3%	< 30	96.3%	100.5%	50 - 150		
Propiconazole	0.000	0.615	0.610	0.800	0.9%	< 30	76.9%	76.2%	50 - 150		
Propoxur	0.000	0.316	0.309	0.400	2.3%	< 30	79.1%	77.3%	50 - 150		
Pyrethrins	0.011	0.276	0.276	0.413	0.0%	< 30	64.2%	64.2%	50 - 150		
Pyridaben	0.000	0.274	0.268	0.400	2.4%	< 30	68.5%	66.9%	50 - 150		
Spinosad	0.000	0.332	0.319	0.388	4.0%	< 30	85.6%	82.2%	50 - 150		
Spiromesifen	0.000	0.297	0.298	0.400	0.4%	< 30	74.3%	74.6%	50 - 150		
Spirotetramat	0.000	0.383	0.387	0.400	1.1%	< 30	95.6%	96.7%	50 - 150		
Spiroxamine	0.000	0.740	0.742	0.800	0.2%	< 30	92.5%	92.7%	50 - 150		
Tebuconazol	0.000	0.617	0.610	0.800	1.2%	< 30	77.1%	76.2%	50 - 150		
Thiacloprid	0.000	0.266	0.264	0.400	0.7%	< 30	66.4%	66.0%	50 - 150		
Thiamethoxam	0.000	0.470	0.401	0.400	15.9%	< 30	117.5%	100.2%	50 - 150		
Trifloxystrobin	0.000	0.321	0.320	0.400	0.0%	< 30	80.1%	80.1%	50 - 150		



12423 NE Whitaker Way
Portland, OR 97230
503-254-1794



Report Number: 21-012071/D004.R000
Report Date: 10/19/2021
ORELAP#: OR100028
Purchase Order:
Received: 10/12/21 14:15

Revision #: 0.00 Control : CFL-D06
Revision Date: 05/31/2019 Effective Date: 05/31/2019

Laboratory Quality Control Results

J AOAC 2015 V98-6								
Batch ID: 2109283								
Laboratory Control Sample								
Analyte	Result	Spike	Units	% Rec	Limits	Evaluation	Notes	
CBDVA	0.198	0.2	%	99.0	85.0 - 115	Acceptable		
CBDV	0.205	0.2	%	103	85.0 - 115	Acceptable		
CBE	0.199	0.2	%	99.5	85.0 - 115	Acceptable		
CBD	0.219	0.2	%	109	85.0 - 115	Acceptable		
CBGA	0.191	0.2	%	95.7	85.0 - 115	Acceptable		
CBG	0.192	0.2	%	95.9	85.0 - 115	Acceptable		
CBD	0.213	0.2	%	107	85.0 - 115	Acceptable		
THCV	0.186	0.2	%	93.1	85.0 - 115	Acceptable		
d8THCV	0.191	0.2	%	95.3	85.0 - 115	Acceptable		
THCVA	0.190	0.2	%	94.8	85.0 - 115	Acceptable		
CBN	0.211	0.2	%	105	85.0 - 115	Acceptable		
exo-THC	0.183	0.2	%	91.6	85.0 - 115	Acceptable		
d9THC	0.199	0.2	%	99.3	85.0 - 115	Acceptable		
d8THC	0.186	0.2	%	93.1	85.0 - 115	Acceptable		
CBL	0.177	0.2	%	88.3	85.0 - 115	Acceptable		
CBC	0.190	0.2	%	95.1	85.0 - 115	Acceptable		
THCA	0.209	0.2	%	105	85.0 - 115	Acceptable		
CBCA	0.200	0.2	%	99.8	85.0 - 115	Acceptable		
CBLA	0.196	0.2	%	98.2	85.0 - 115	Acceptable		
CBT	0.194	0.2	%	97.0	85.0 - 115	Acceptable		

Method Blank

Analyte	Result	LOQ	Units	Limits	Evaluation	Notes
CBDVA	<LOQ	0.1	%	< 0.1	Acceptable	
CBDV	<LOQ	0.1	%	< 0.1	Acceptable	
CBE	<LOQ	0.1	%	< 0.1	Acceptable	
CBD	<LOQ	0.1	%	< 0.1	Acceptable	
CBGA	<LOQ	0.1	%	< 0.1	Acceptable	
CBG	<LOQ	0.1	%	< 0.1	Acceptable	
CBD	<LOQ	0.1	%	< 0.1	Acceptable	
THCV	<LOQ	0.1	%	< 0.1	Acceptable	
d8THCV	<LOQ	0.1	%	< 0.1	Acceptable	
THCVA	<LOQ	0.1	%	< 0.1	Acceptable	
CBN	<LOQ	0.1	%	< 0.1	Acceptable	
exo-THC	<LOQ	0.1	%	< 0.1	Acceptable	
d9THC	<LOQ	0.1	%	< 0.1	Acceptable	
d8THC	<LOQ	0.1	%	< 0.1	Acceptable	
CBL	<LOQ	0.1	%	< 0.1	Acceptable	
CBC	<LOQ	0.1	%	< 0.1	Acceptable	
THCA	<LOQ	0.1	%	< 0.1	Acceptable	
CBCA	<LOQ	0.1	%	< 0.1	Acceptable	
CBLA	<LOQ	0.1	%	< 0.1	Acceptable	
CBT	<LOQ	0.1	%	< 0.1	Acceptable	

Abbreviations

ND - None Detected at or above MRL
RPD - Relative Percent Difference
LOQ - Limit of Quantitation

Units of Measure:

% - Percent



12423 NE Whitaker Way
 Portland, OR 97230
 503-254-1794



Report Number: 21-012071/D004.R000
Report Date: 10/19/2021
ORELAP#: OR100028
Purchase Order:
Received: 10/12/21 14:15

Revision #: 0.00 Control : CFL-D06
 Revision Date: 05/31/2019 Effective Date: 05/31/2019

Laboratory Quality Control Results

J AOAC 2015 V98-6		Batch ID: 2109283						
Sample Duplicate		Sample ID: 21-012040-0001						
Analyte	Result	Org. Result	LOQ	Units	RPD	Limits	Evaluation	Notes
CBDVA	<LOQ	<LOQ	0.1	%	NA	< 20	Acceptable	
CBDV	<LOQ	<LOQ	0.1	%	NA	< 20	Acceptable	
CBE	<LOQ	<LOQ	0.1	%	NA	< 20	Acceptable	
CBD A	<LOQ	<LOQ	0.1	%	NA	< 20	Acceptable	
CBGA	<LOQ	<LOQ	0.1	%	NA	< 20	Acceptable	
CBG	<LOQ	<LOQ	0.1	%	NA	< 20	Acceptable	
CBD	<LOQ	<LOQ	0.1	%	NA	< 20	Acceptable	
THCV	<LOQ	<LOQ	0.1	%	NA	< 20	Acceptable	
d8THCV	<LOQ	<LOQ	0.1	%	NA	< 20	Acceptable	
THCVA	<LOQ	<LOQ	0.1	%	NA	< 20	Acceptable	
CBN	25.3	25.6	0.1	%	1.22	< 20	Acceptable	
exo-THC	<LOQ	<LOQ	0.1	%	NA	< 20	Acceptable	
d9THC	<LOQ	<LOQ	0.1	%	NA	< 20	Acceptable	
d8THC	<LOQ	<LOQ	0.1	%	NA	< 20	Acceptable	
CBL	<LOQ	<LOQ	0.1	%	NA	< 20	Acceptable	
CBC	<LOQ	<LOQ	0.1	%	NA	< 20	Acceptable	
THCA	<LOQ	<LOQ	0.1	%	NA	< 20	Acceptable	
CBCA	<LOQ	<LOQ	0.1	%	NA	< 20	Acceptable	
CBLA	<LOQ	<LOQ	0.1	%	NA	< 20	Acceptable	
CBT	<LOQ	<LOQ	0.1	%	NA	< 20	Acceptable	

Abbreviations

- ND - None Detected at or above MRL
- RPD - Relative Percent Difference
- LOQ - Limit of Quantitation
- NA - Calculation Not Applicable given non-numerical results

Units of Measure:

% - Percent



12423 NE Whitaker Way
Portland, OR 97230
503-254-1794



Report Number: 21-012071/D004.R000
Report Date: 10/19/2021
ORELAP#: OR100028
Purchase Order:
Received: 10/12/21 14:15

Revision: Document ID:
Legacy ID: Effective:

Laboratory Quality Control Results									
Residual Solvents					Batch ID: 2109400				
Method Blank			Laboratory Control Sample						
Analyte	Result	LOQ	Notes	Result	Spike	Units	% Rec	Limits	Notes
Propane	ND	< 200		459	407	µg/g	112.8	70	130
Isobutane	ND	< 200		521	491	µg/g	106.1	70	130
Butane	ND	< 200		515	491	µg/g	104.9	70	130
2,2-Dimethylpropane	ND	< 200		734	609	µg/g	120.5	70	130
Methanol	ND	< 200		1590	1610	µg/g	98.8	70	130
Ethylene Oxide	ND	< 30		34.3	38.9	µg/g	88.2	70	130
2-Methylbutane	ND	< 200		1540	1610	µg/g	95.7	70	130
Pentane	ND	< 200		1530	1610	µg/g	95.0	70	130
Ethanol	ND	< 200		1720	1610	µg/g	106.8	70	130
Ethyl Ether	ND	< 200		1510	1610	µg/g	93.8	70	130
2,2-Dimethylbutane	ND	< 30		147	164	µg/g	89.6	70	130
Acetone	ND	< 200		1550	1610	µg/g	96.3	70	130
2-Propanol	ND	< 200		1660	1610	µg/g	103.1	70	130
Acetonitrile	ND	< 100		473	484	µg/g	97.7	70	130
2,3-Dimethylbutane	ND	< 30		183	167	µg/g	109.6	70	130
Dichloromethane	ND	< 60		478	491	µg/g	97.4	70	130
2-Methylpentane	ND	< 30		168	165	µg/g	101.8	70	130
3-Methylpentane	ND	< 30		173	172	µg/g	100.6	70	130
Hexane	ND	< 30		163	167	µg/g	97.6	70	130
Ethyl acetate	ND	< 200		1590	1610	µg/g	98.8	70	130
2-Butanol	ND	< 200		1610	1610	µg/g	100.0	70	130
Tetrahydrofuran	ND	< 100		498	483	µg/g	103.1	70	130
Cyclohexane	ND	< 200		1450	1610	µg/g	90.1	70	130
Benzene	ND	< 1		4.96	5.36	µg/g	92.5	70	130
Isopropyl Acetate	ND	< 200		1690	1620	µg/g	104.3	70	130
Heptane	ND	< 200		1540	1610	µg/g	95.7	70	130
1,4-Dioxane	ND	< 100		489	489	µg/g	100.0	70	130
2-Ethoxyethanol	ND	< 30		156	167	µg/g	93.4	70	130
Ethylene Glycol	ND	< 200		476	504	µg/g	94.4	70	130
Toluene	ND	< 200		462	484	µg/g	95.5	70	130
Ethylbenzene	ND	< 200		944	960	µg/g	97.5	70	130
m,p-Xylene	ND	< 200		982	977	µg/g	100.5	70	130
o-Xylene	ND	< 200		1000	982	µg/g	101.8	70	130
Cumene	ND	< 30		169	169	µg/g	100.0	70	130



12423 NE Whitaker Way
Portland, OR 97230
503-254-1794



Report Number: 21-012071/D004.R000
Report Date: 10/19/2021
ORELAP#: OR100028
Purchase Order:
Received: 10/12/21 14:15

Revision: Document ID:
Legacy ID: Effective:

QC - Sample Duplicate Sample ID: 21-011973-0001

Analyte	Result	Org. Result	LOQ	Units	RPD	Limits	Accept/Fail	Notes
Propane	ND	ND	200	µg/g	0.0	< 20	Acceptable	
Isobutane	ND	ND	200	µg/g	0.0	< 20	Acceptable	
Butane	ND	ND	200	µg/g	0.0	< 20	Acceptable	
2,2-Dimethylpropane	ND	ND	200	µg/g	0.0	< 20	Acceptable	
Methanol	ND	ND	200	µg/g	0.0	< 20	Acceptable	
Ethylene Oxide	ND	ND	30	µg/g	0.0	< 20	Acceptable	
2-Methylbutane	ND	ND	200	µg/g	0.0	< 20	Acceptable	
Pentane	ND	ND	200	µg/g	0.0	< 20	Acceptable	
Ethanol	ND	ND	200	µg/g	0.0	< 20	Acceptable	
Ethyl Ether	ND	ND	200	µg/g	0.0	< 20	Acceptable	
2,2-Dimethylbutane	ND	ND	30	µg/g	0.0	< 20	Acceptable	
Acetone	ND	ND	200	µg/g	0.0	< 20	Acceptable	
2-Propanol	ND	ND	200	µg/g	0.0	< 20	Acceptable	
Acetonitrile	ND	ND	100	µg/g	0.0	< 20	Acceptable	
2,3-Dimethylbutane	ND	ND	30	µg/g	0.0	< 20	Acceptable	
Dichloromethane	ND	ND	60	µg/g	0.0	< 20	Acceptable	
2-Methylpentane	ND	ND	30	µg/g	0.0	< 20	Acceptable	
3-Methylpentane	ND	ND	30	µg/g	0.0	< 20	Acceptable	
Hexane	ND	ND	30	µg/g	0.0	< 20	Acceptable	
Ethyl acetate	ND	ND	200	µg/g	0.0	< 20	Acceptable	
2-Butanol	ND	ND	200	µg/g	0.0	< 20	Acceptable	
Tetrahydrofuran	ND	ND	100	µg/g	0.0	< 20	Acceptable	
Cyclohexane	ND	ND	200	µg/g	0.0	< 20	Acceptable	
Benzene	ND	ND	1	µg/g	0.0	< 20	Acceptable	
Isopropyl Acetate	ND	ND	200	µg/g	0.0	< 20	Acceptable	
Heptane	ND	ND	200	µg/g	0.0	< 20	Acceptable	
1,4-Dioxane	ND	ND	100	µg/g	0.0	< 20	Acceptable	
2-Ethoxyethanol	ND	ND	30	µg/g	0.0	< 20	Acceptable	
Ethylene Glycol	ND	ND	200	µg/g	0.0	< 20	Acceptable	
Toluene	ND	ND	200	µg/g	0.0	< 20	Acceptable	
Ethylbenzene	ND	ND	200	µg/g	0.0	< 20	Acceptable	
m,p-Xylene	ND	ND	200	µg/g	0.0	< 20	Acceptable	
o-Xylene	ND	ND	200	µg/g	0.0	< 20	Acceptable	
Cumene	ND	ND	30	µg/g	0.0	< 20	Acceptable	

Abbreviations

ND - None Detected at or above MRL
RPD - Relative Percent Difference
LOQ - Limit of Quantitation

Units of Measure:

µg/g - Microgram per gram or ppm



12423 NE Whitaker Way
Portland, OR 97230
503-254-1794



Report Number: 21-012071/D004.R000
Report Date: 10/19/2021
ORELAP#: OR100028
Purchase Order:
Received: 10/12/21 14:15

Revision: Document ID:
Legacy ID: Effective:

Terpenes Quality Control Results

Method Reference: EPA6035				Batch ID: 2109407					
Method Blank				Laboratory Control Sample					
Analyte	Result	LOQ	Notes	Result	LCS	Units	LCS % Rec	Limits	Notes
a-pinene	<LOQ	< 200		435	500	µg/g	87%	70 - 130	
Camphene	<LOQ	< 200		459	500	µg/g	92%	70 - 130	
Sabinene	<LOQ	< 200		429	500	µg/g	86%	70 - 130	
b-Phene	<LOQ	< 200		425	500	µg/g	85%	70 - 130	
b-Myrcene	<LOQ	< 200		451	500	µg/g	90%	70 - 130	
a-phellandrene	<LOQ	< 200		463	500	µg/g	93%	70 - 130	
d-3-Caene	<LOQ	< 200		506	500	µg/g	101%	70 - 130	
a-Terpinene	<LOQ	< 200		384	500	µg/g	77%	70 - 130	
p-Cymene	<LOQ	< 200		444	500	µg/g	89%	70 - 130	
D-Limonene	<LOQ	< 200		412	500	µg/g	82%	70 - 130	
Eucalyptol	<LOQ	< 200		429	500	µg/g	86%	70 - 130	
b-α-Cimene	<LOQ	< 67		145	167	µg/g	87%	70 - 130	
b-trans-Cimene	<LOQ	< 133		299	333	µg/g	90%	70 - 130	
γ-Terpinene	<LOQ	< 200		427	500	µg/g	85%	70 - 130	
Sabinene Hydrate	<LOQ	< 200		400	500	µg/g	80%	70 - 130	
Terpinolene	<LOQ	< 200		378	500	µg/g	76%	70 - 130	
D-Fenchone	<LOQ	< 200		432	500	µg/g	86%	70 - 130	
Linalool	<LOQ	< 200		474	500	µg/g	95%	70 - 130	
Fenchol	<LOQ	< 200		416	500	µg/g	83%	70 - 130	
Camphor	<LOQ	< 200		422	500	µg/g	84%	70 - 130	
Isopulego	<LOQ	< 200		444	500	µg/g	89%	70 - 130	
Isborneol	<LOQ	< 200		422	500	µg/g	84%	70 - 130	
Borneol	<LOQ	< 200		419	500	µg/g	84%	70 - 130	
DL-Menthol	<LOQ	< 200		425	500	µg/g	85%	70 - 130	
Terpineol	<LOQ	< 200		399	500	µg/g	80%	70 - 130	
Nerol	<LOQ	< 200		390	500	µg/g	78%	70 - 130	
Pulegone	<LOQ	< 200		441	500	µg/g	88%	70 - 130	
Geraniol	<LOQ	< 200		437	500	µg/g	87%	70 - 130	
Geranyl Acetate	<LOQ	< 200		408	500	µg/g	82%	70 - 130	
α-Cedrene	<LOQ	< 200		414	500	µg/g	83%	70 - 130	
b-Caryophyllene	<LOQ	< 200		385	500	µg/g	77%	70 - 130	
α-Humulene	<LOQ	< 200		461	500	µg/g	92%	70 - 130	
Valenene	<LOQ	< 200		366	500	µg/g	73%	70 - 130	
cis-Nerolidol	<LOQ	< 200		425	500	µg/g	85%	70 - 130	
α-Farnesene	<LOQ	< 200		494	500	µg/g	99%	70 - 130	
trans-Nerolidol	<LOQ	< 200		434	500	µg/g	87%	70 - 130	
Caryophyllene Oxide	<LOQ	< 200		523	500	µg/g	105%	70 - 130	
Guaiol	<LOQ	< 200		438	500	µg/g	88%	70 - 130	
Cedrol	<LOQ	< 200		395	500	µg/g	79%	70 - 130	
α-Bisabolol	<LOQ	< 200		427	500	µg/g	85%	70 - 130	

Definitions

LOQ	Limit of Quantitation
LCS	Laboratory Control Sample
%REC	Percent Recovery



12423 NE Whitaker Way
 Portland, OR 97230
 503-254-1794



Report Number: 21-012071/D004.R000
Report Date: 10/19/2021
ORELAP#: OR100028
Purchase Order:
Received: 10/12/21 14:15

Revision: Document ID:
 Legacy ID: Effective:

Terpenes Quality Control Results

Method Reference: EPA5035		Batch ID: 2109407					
Sample/Sample Duplicate		Sample ID: 21-012071-0001					
Analyte	Result	Org. Result	LOQ	Units	% RPD	LIMIT	Notes
a-phene	1850	1790	187	µg/g	3%	< 20	
Camphene	292	292	187	µg/g	0%	< 20	
Sabinene	<LOQ	<LOQ	187	µg/g	0%	< 20	
b-Phene	2400	2360	187	µg/g	2%	< 20	
b-Myrcene	44200	43000	187	µg/g	3%	< 20	
a-phellandrene	1010	969	187	µg/g	4%	< 20	
d-3-Caene	700	728	187	µg/g	4%	< 20	
a-Terpinene	1010	1030	187	µg/g	2%	< 20	
p-Cymene	295	247	187	µg/g	18%	< 20	
D-Limonene	10300	10100	187	µg/g	2%	< 20	
Eucalyptol	<LOQ	<LOQ	187	µg/g	0%	< 20	
b-cis-OCimene	267	248	62.3	µg/g	7%	< 20	
b-trans-OCimene	5850	5700	125	µg/g	3%	< 20	
g-Terpinene	704	699	187	µg/g	1%	< 20	
Sabinene Hydrate	<LOQ	<LOQ	187	µg/g	0%	< 20	
Terpinolene	22800	22400	187	µg/g	2%	< 20	
D-Fenchone	<LOQ	<LOQ	187	µg/g	0%	< 20	
Linalool	1230	1200	187	µg/g	2%	< 20	
Fenchol	1040	1030	187	µg/g	1%	< 20	
Camphor	<LOQ	<LOQ	187	µg/g	0%	< 20	
Isopulego	<LOQ	<LOQ	187	µg/g	0%	< 20	
Isborneol	<LOQ	<LOQ	187	µg/g	0%	< 20	
Borneol	240	240	187	µg/g	0%	< 20	
DL-Menthol	<LOQ	<LOQ	187	µg/g	0%	< 20	
Terpineol	917	898	187	µg/g	2%	< 20	
Nerol	<LOQ	<LOQ	187	µg/g	0%	< 20	
Perlegone	<LOQ	<LOQ	187	µg/g	0%	< 20	
Geraniol	<LOQ	<LOQ	187	µg/g	0%	< 20	
Geranyl_Acetate	<LOQ	<LOQ	187	µg/g	0%	< 20	
a-Cedrene	<LOQ	<LOQ	187	µg/g	0%	< 20	
b-Caryophyllene	7510	7390	187	µg/g	2%	< 20	
a-Humulene	3200	3080	187	µg/g	4%	< 20	
Valenene	624	572	187	µg/g	9%	< 20	
cis-Nerolidol	<LOQ	<LOQ	187	µg/g	0%	< 20	
a-Farnesene	6700	6590	187	µg/g	2%	< 20	
trans-Nerolidol	537	501	187	µg/g	7%	< 20	
Caryophyllene Oxide	423	414	187	µg/g	2%	< 20	
Guaiol	5070	5010	187	µg/g	1%	< 20	
Cedrol	<LOQ	<LOQ	187	µg/g	0%	< 20	
a-Bisabolol	1100	1070	187	µg/g	3%	< 20	

Definitions

RPD Relative Percent Difference



12423 NE Whitaker Way
 Portland, OR 97230
 503-254-1794



Report Number: 21-012071/D004.R000
Report Date: 10/19/2021
ORELAP#: OR100028
Purchase Order:
Received: 10/12/21 14:15

Explanation of QC Flag Comments:

Code	Explanation
Q	Matrix interferences affecting spike or surrogate recoveries.
Q1	Quality control result biased high. Only non-detect samples reported.
Q2	Quality control outside QC limits. Data considered estimate.
Q3	Sample concentration greater than four times the amount spiked.
Q4	Non-homogenous sample matrix, affecting RPD result and/or % recoveries.
Q5	Spike results above calibration curve.
Q6	Quality control outside QC limits. Data acceptable based on remaining QC.
R	Relative percent difference (RPD) outside control limit.
R1	RPD non-calculable, as sample or duplicate results are less than five times the LOQ.
R2	Sample replicates RPD non-calculable, as only one replicate is within the analytical range.
LOQ1	Quantitation level raised due to low sample volume and/or dilution.
LOQ2	Quantitation level raised due to matrix interference.
B	Analyte detected in method blank, but not in associated samples.
B1	The sample concentration is greater than 5 times the blank concentration.
B2	The sample concentration is less than 5 times the blank concentration.



12423 NE Whitaker Way
 Portland, OR 97230
 503-254-1794



Report Number: 22-006993/D003.R000
Report Date: 06/21/2022
ORELAP#: OR100028
Purchase Order:
Received: 06/15/22 10:52

Customer: DH Ventures LLC
Product identity: 828-55-1
Client/Metric ID: .
Laboratory ID: 22-006993-0001

Summary

Potency:

Analyte	Result (%)		
HHC (9R)	63.4	<ul style="list-style-type: none"> ● HHC (9R-Hexahydrocannabinol) ● HHC (9S-Hexahydrocannabinol) ● Δ8-THC ● CBN 	CBD-Total <LOQ
HHC (9S)	26.9		THC-Total <LOQ
Δ8-THC	0.281		(Reported in percent of total sample)
CBN	0.176		

Residual Solvents:

All analytes passing and less than LOQ.

Pesticides:

All analytes passing and less than LOQ.



12423 NE Whitaker Way
 Portland, OR 97230
 503-254-1794



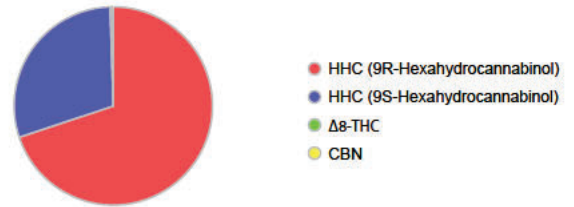
Report Number: 22-006993/D003.R000
Report Date: 06/21/2022
ORELAP#: OR100028
Purchase Order:
Received: 06/15/22 10:52

Customer: DH Ventures LLC
 2205 W. Monroe St
 Burns OR 97720
 United States of America (USA)

Product identity: 828-55-1
Client/Metric ID: .
Sample Date:
Laboratory ID: 22-006993-0001
Evidence of Cooling: No
Temp: 19.5 °C
Relinquished by: UPS

Sample Results

Potency Analyte	Method J AOAC 2015 V98-6 (mod)	Units %	Batch: 2205204	Analyze: 6/16/22 9:34:00 PM
	As Received	Dry weight	LOQ	Notes
CBD	< LOQ		0.0705	
CBD-A	< LOQ		0.0705	
CBD-Total	< LOQ		0.132	
CBG ⁺	< LOQ		0.0705	
CBG-A ⁺	< LOQ		0.0705	
CBG-Total	< LOQ		0.132	
CBN	0.176		0.0705	
Δ8-THC	0.281		0.0705	
Δ9-THC	< LOQ		0.0705	
HHC (9R)	63.4		0.705	
HHC (9S)	26.9		0.705	
THC-A	< LOQ		0.0705	
THC-O-Acetate, delta-8 ⁺	< LOQ		0.0705	
THC-O-Acetate, delta-9 ⁺	< LOQ		0.0705	
THC-Total	< LOQ		0.132	
Total Cannabinoids⁺	90.8			





12423 NE Whitaker Way
 Portland, OR 97230
 503-254-1794



Report Number: 22-006993/D003.R000
Report Date: 06/21/2022
ORELAP#: OR100028
Purchase Order:
Received: 06/15/22 10:52

Solvents						Residual Solvents by GC/MS					Units	µg/g	Batch	2205275	Analyze	06/21/22	10:18 AM	
Analyte	Method	Result	Limits	LOQ	Status	Notes	Analyte	Result	Limits	LOQ	Status	Notes						
1,4-Dioxane		< LOQ	380	100	pass		2-Butanol	< LOQ	5000	200	pass							
2-Ethoxyethanol		< LOQ	160	30.0	pass		2-Methylbutane (Isopentane)	< LOQ		200								
2-Methylpentane		< LOQ		30.0			2-Propanol (IPA)	< LOQ	5000	200	pass							
2,2-Dimethyl butane		< LOQ		30.0			2,2-Dimethylpropane (neo-pentane)	< LOQ		200								
2,3-Dimethyl butane		< LOQ		30.0			3-Methylpentane	< LOQ		30.0								
Acetone		< LOQ	5000	200	pass		Acetonitrile	< LOQ	410	100	pass							
Benzene		< LOQ	2.00	1.00	pass		Butanes (sum)	< LOQ	5000	400	pass							
Cyclohexane		< LOQ	3880	200	pass		Ethyl acetate	< LOQ	5000	200	pass							
Ethyl benzene		< LOQ		200			Ethyl ether	< LOQ	5000	200	pass							
Ethylene glycol		< LOQ	620	200	pass		Ethylene oxide	< LOQ	50.0	20.0	pass							
Hexanes (sum)		< LOQ	290	150	pass		Isopropyl acetate	< LOQ	5000	200	pass							
Isopropyl benzene (Cumene)		< LOQ	70.0	30.0	pass		m,p-Xylene	< LOQ		200								
Methanol		< LOQ	3000	200	pass		Methylene chloride	< LOQ	600	60.0	pass							
Methylpropane (Isobutane)		< LOQ		200			n-Butane	< LOQ		200								
n-Heptane		< LOQ	5000	200	pass		n-Hexane	< LOQ		30.0								
n-Pentane		< LOQ		200			o-Xylene	< LOQ		200								
Pentanes (sum)		< LOQ	5000	600	pass		Propane	< LOQ	5000	200	pass							
Tetrahydrofuran		< LOQ	720	100	pass		Toluene	< LOQ	890	100	pass							
Total Xylenes		< LOQ		400			Total Xylenes and Ethyl benzene	< LOQ	2170	600	pass							



12423 NE Whitaker Way
Portland, OR 97230
503-254-1794



Report Number: 22-006993/D003.R000
Report Date: 06/21/2022
ORELAP#: OR100028
Purchase Order:
Received: 06/15/22 10:52

Pesticides											
Method AOAC 2007.01 & EN 15662 (mod) Units mg/kg Batch 2205216 Analyze 06/17/22 04:51 PM											
Analyte	Result	Limits	LOQ	Status	Notes	Analyte	Result	Limits	LOQ	Status	Notes
Abamectin	< LOQ	0.50	0.250	pass		Acephate	< LOQ	0.40	0.250	pass	
Acequinocyl	< LOQ	2.0	1.00	pass		Acetamiprid	< LOQ	0.20	0.100	pass	
Aldicarb	< LOQ	0.40	0.200	pass		Azoxystrobin	< LOQ	0.20	0.100	pass	
Bifenazate	< LOQ	0.20	0.100	pass		Bifenthrin	< LOQ	0.20	0.100	pass	
Boscalid	< LOQ	0.40	0.200	pass		Carbaryl	< LOQ	0.20	0.100	pass	
Carbofuran	< LOQ	0.20	0.100	pass		Chlorantraniliprole	< LOQ	0.20	0.100	pass	
Chlorfenapyr	< LOQ	1.0	0.500	pass		Chlorpyrifos	< LOQ	0.20	0.100	pass	
Clofentezine	< LOQ	0.20	0.100	pass		Cyfluthrin	< LOQ	1.0	0.500	pass	
Cypermethrin	< LOQ	1.0	0.500	pass		Daminozide	< LOQ	1.0	0.500	pass	
Diazinon	< LOQ	0.20	0.100	pass		Dichlorvos	< LOQ	1.0	0.500	pass	
Dimethoate	< LOQ	0.20	0.100	pass		Ethoprophos	< LOQ	0.20	0.100	pass	
Etofenprox	< LOQ	0.40	0.200	pass		Etoxazole	< LOQ	0.20	0.100	pass	
Fenoxycarb	< LOQ	0.20	0.100	pass		Fenpyroximate	< LOQ	0.40	0.200	pass	
Fipronil	< LOQ	0.40	0.200	pass		Fonicamid	< LOQ	1.0	0.400	pass	
Fludioxonil	< LOQ	0.40	0.200	pass		Hexythiazox	< LOQ	1.0	0.400	pass	
Imazalil	< LOQ	0.20	0.100	pass		Imidacloprid	< LOQ	0.40	0.200	pass	
Kresoxim-methyl	< LOQ	0.40	0.200	pass		Malathion	< LOQ	0.20	0.100	pass	
Metalaxyl	< LOQ	0.20	0.100	pass		Methiocarb	< LOQ	0.20	0.100	pass	
Methomyl	< LOQ	0.40	0.200	pass		MGK-264	< LOQ	0.20	0.100	pass	
Myclobutanil	< LOQ	0.20	0.100	pass		Naled	< LOQ	0.50	0.250	pass	
Oxamyl	< LOQ	1.0	0.500	pass		Paclotrazole	< LOQ	0.40	0.200	pass	
Parathion-Methyl	< LOQ	0.20	0.200	pass		Permethrin	< LOQ	0.20	0.100	pass	
Phosmet	< LOQ	0.20	0.100	pass		Piperonyl butoxide	< LOQ	2.0	1.00	pass	
Prallethrin	< LOQ	0.20	0.200	pass		Propiconazole	< LOQ	0.40	0.200	pass	
Propoxur	< LOQ	0.20	0.100	pass		Pyrethrin I (total)	< LOQ	1.0	0.500	pass	
Pyridaben	< LOQ	0.20	0.100	pass		Spinosad	< LOQ	0.20	0.100	pass	
Spiromesifen	< LOQ	0.20	0.100	pass		Spirotetramat	< LOQ	0.20	0.100	pass	
Spiroxamine	< LOQ	0.40	0.200	pass		Tebuconazole	< LOQ	0.40	0.200	pass	
Thiacloprid	< LOQ	0.20	0.100	pass		Thiamethoxam	< LOQ	0.20	0.100	pass	
Trifloxystrobin	< LOQ	0.20	0.100	pass							



12423 NE Whitaker Way
Portland, OR 97230
503-254-1794



Report Number: 22-006993/D003.R000
Report Date: 06/21/2022
ORELAP#: OR100028
Purchase Order:
Received: 06/15/22 10:52

These test results are representative of the individual sample selected and submitted by the client.

Abbreviations

Limits: Action Levels per OAR-333-007-0400, OAR-333-007-0210, OAR-333-007-0220, CCR title 16-division 42. BCC-section 5723

Limit(s) of Quantitation (LOQ): The minimum levels, concentrations, or quantities of a target variable (e.g., target analyte) that can be reported with a specified degree of confidence.

† = Analyte not NELAP accredited.

Units of Measure

µg/g = Microgram per gram

mg/kg = Milligram per kilogram = parts per million (ppm)

% = Percentage of sample

% wt = µg/g divided by 10,000

Approved Signatory

Derrick Tanner
General Manager