



DEA No. RA0571996  
 FL License # CMTL-0003  
 CLIA No. 10D1094068

# Certificate of Analysis

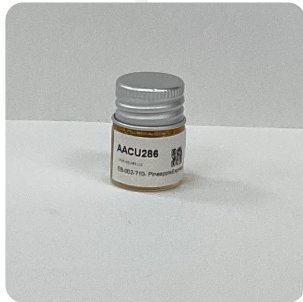
Compliance Test

**Pastel Cartel**  
 13326 Immanuel Rd  
 Pflugerville, Texas 78660

Batch # EB-002-Δ10-Pineapple-Express    Test Reg State: Florida  
 Batch Date: 2022-05-05  
 Extracted From: Hemp

Order # PUR220505-090001  
 Order Date: 2022-05-05  
 Sample # AACU286

Sampling Date: 2022-05-11    Initial Gross Weight: 12.484 g  
 Lab Batch Date: 2022-05-11  
 Completion Date: 2022-05-16



Product Image

**Potency  
 Tested**

**Delta 8/Delta 10  
 Potency 13**

Specimen Weight: 53.320 mg

Analyte	LOD (%)	LOQ (%)	Result (mg/g)	(%)
Delta-8 THC	2.600E-5	0.0015	603.000	60.300
Delta6a10a-THC	8.469E-5	0.0015	128.200	12.820
Delta-10 THC	3.000E-6	0.0015	5.980	0.598
CBC	1.800E-5	0.0015	<LOQ	<LOQ
THCV	7.000E-6	0.0015	<LOQ	<LOQ
CBD	5.400E-5	0.0015	<LOQ	<LOQ
Delta-9 THC	1.300E-5	0.0015	<LOQ	<LOQ
CBN	1.400E-5	0.0015	<LOQ	<LOQ
CBGA	8.000E-5	0.0015	<LOQ	<LOQ
CBG	2.480E-4	0.0015	<LOQ	<LOQ
CBDV	6.500E-5	0.0015	<LOQ	<LOQ
CBDA	1.000E-5	0.0015	<LOQ	<LOQ
THCA	3.200E-5	0.0015	<LOQ	<LOQ

**Tested**  
 (LCU)

**Potency Summary**

<b>Total Delta 8</b> 60.300%	<b>Total Delta 10</b> 0.598%
<b>Total THC</b> None Detected	<b>Total CBD</b> None Detected
<b>Total CBG</b> None Detected	<b>Total CBN</b> None Detected
<b>Other Cannabinoids</b> 12.820%	<b>Total Cannabinoids</b> 73.718%

Xueli Gao    Lab Toxicologist  
 Ph.D., DABT

Aixia Sun    Lab Director/Principal Scientist  
 D.H.Sc., M.Sc., B.Sc., MT (AAB)



Definitions and Abbreviations used in this report: \*Total CBD = CBD + (CBD-A \* 0.877), \*Total CBDV = CBDV + (CBDVA \* 0.87), \*Total THC = THCA-A \* 0.877 + Delta 9 THC, \*Total THCV = THCV + (THCVA \* 0.87), \*CBG Total = (CBGA \* 0.877) + CBG, \*CBN Total = (CBNA \* 0.877) + CBN, \*Total CBC = CBC + (CBCA \* 0.877), \*Total THC-O-Acetate = Delta 8 THC-O-Acetate + Delta 9 THC-O-Acetate, \*Other Cannabinoids Total = Total Cannabinoids - All the listed cannabinoids on the summary section, \*Total Detected Cannabinoids = Delta6a10a-THC + Delta8-THC + Total CBN + CBT + Delta8-THCV + Total CBG + Total CBD + Total THCV + CBL + Total THC + Total CBC + Total CBDV + Delta10-THC + Total THC-O-Acetate, \*Analyte Details above show the Dry Weight Concentrations unless specified as 12% moisture concentration. (mg/ml) = Milligrams per Milliliter, LOQ = Limit of Quantitation, LOD = Limit of Detection, Dilution = Dilution Factor (ppb) = Parts per Billion, (%) = Percent, (cfu/g) = Colony Forming Unit per Gram (cfu/g) = Colony Forming Unit per Gram, , LOD = Limit of Detection, (µg/g) = Microgram per Gram (ppm) = Parts per Million, (ppm) = (µg/g), (aw) = aw (area ratio) = Area Ratio, (mg/Kg) = Milligram per Kilogram, \*Measurement of Uncertainty = +/- 10%

This report shall not be reproduced, without written approval, from ACS Laboratory. The results of this report relate only to the material or product analyzed. Test results are confidential unless explicitly waived otherwise. Accredited by a third-party accrediting body as a competent testing laboratory pursuant to ISO/IEC 17025 of the International Organization for Standardization.